

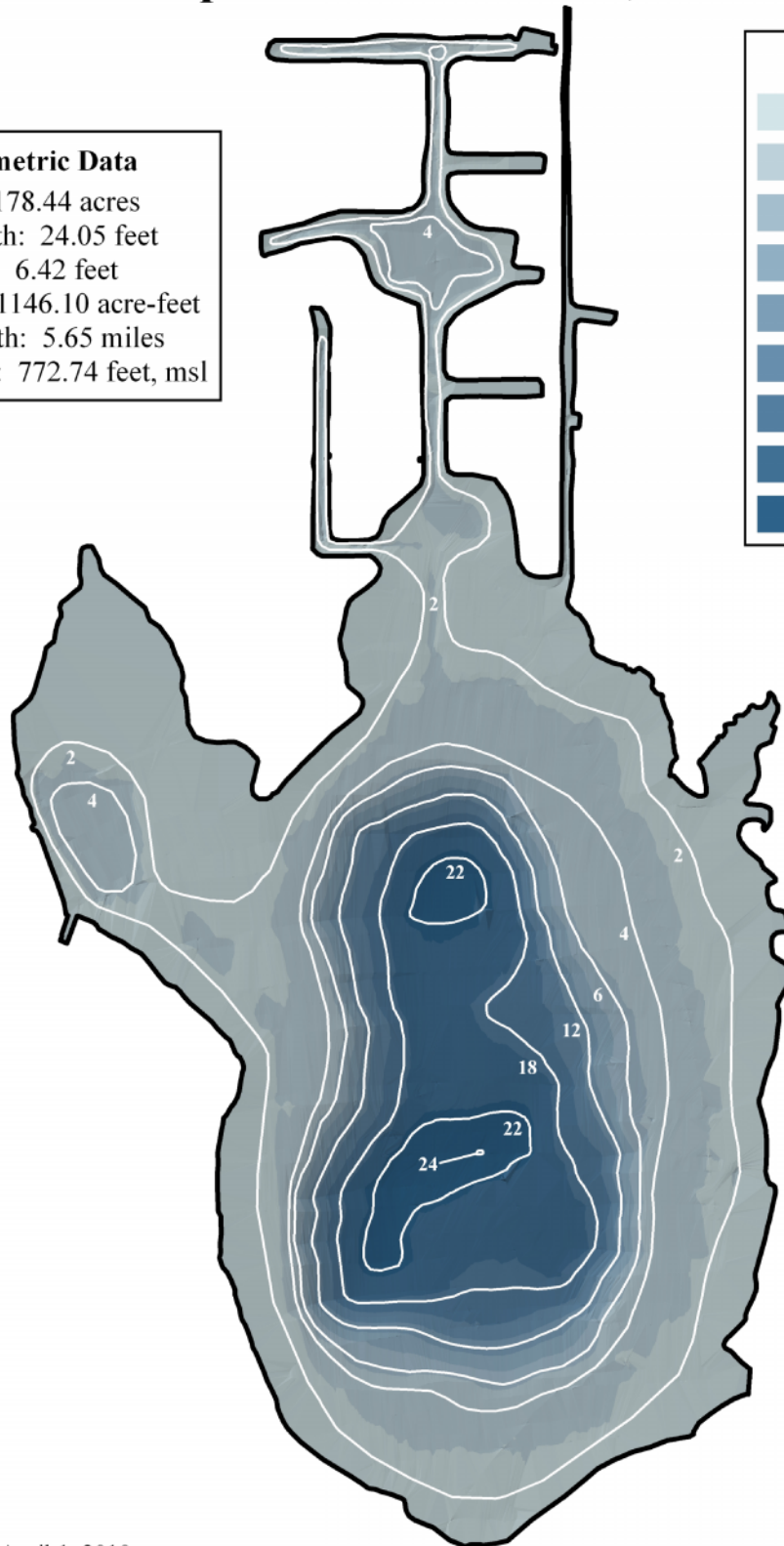
# Bathymetric Map of East Loon Lake, Lake County, IL

## Morphometric Data

Surface Area: 178.44 acres  
 Maximum Depth: 24.05 feet  
 Average Depth: 6.42 feet  
 Lake Volume: 1146.10 acre-feet  
 Shoreline Length: 5.65 miles  
 Lake Elevation: 772.74 feet, msl

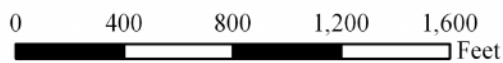
## Elevation

	-2.672 - 0
	-5.344 - -2.672
	-8.016 - -5.344
	-10.688 - -8.016
	-13.36 - -10.688
	-16.032 - -13.36
	-18.704 - -16.032
	-21.376 - -18.704
	-24.049 - -21.376



Survey Data Collected April 1, 2010

This map is intended for water quality reference only, not intended for navigational, swimming, or diving purposes.



Environmental Services  
 ELN-Bathymap2010  
 Revised 11/2010